

ANTIBODIES

FOR IMMUNOHISTOCHEMISTRY

ScyTek Laboratories, Inc
205 South 600 West
Logan, UT 84321-3286

scytek@scytek.com
PH. - 1.435.755.9848
FAX - 1.435.755.0015

For Complete Instructions for Use,
Please Visit the Desired Individual
Product at SCYTEK.COM

For a Distributor in Your Country,
Please Visit SCYTEK.COM/GLOBAL_DISTRIBUTORS



CYTOKERATINS (CK, KERATINS)

Cytokeratins (CK, Keratins): Cytokeratins are intermediate filament keratin-containing proteins that can be found in epithelial tissue. Cytokeratins are further categorized into Type I (acidic) and Type II (basic or neutral) in addition to subdivisions based on molecular weight. ScyTek offers a wide variety of both specific and broad spectrum antibodies.



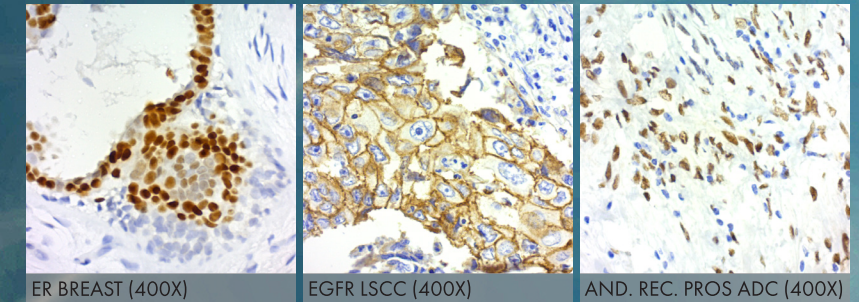
CK19 PROSTATE (400X)

CK HMW SKIN (200X)

CK7 LUNG ADENO (400X)

RECEPTORS

Numerous receptor sites are important for initiation of signaling pathways that lead to changes in the behavior of the target cells. High quality, well characterized markers for receptors have become increasingly important in a variety of disease states.



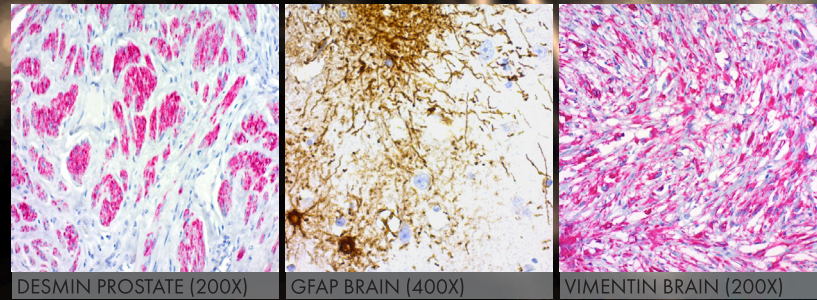
ER BREAST (400X)

EGFR LSCC (400X)

AND. REC. PROS ADC (400X)

INTERMEDIATE FILAMENTS (TYPE III)

Type III Intermediate Filaments are proteins that include Desmin, Vimentin, and GFAP. We offer multiple clones to specifically label and differentiate these proteins.



DESMIN PROSTATE (200X)

GFAP BRAIN (400X)

VIMENTIN BRAIN (200X)

TUMOR MARKERS

In recent years, tumor markers have become more useful as leading-edge research has identified numerous markers with ever increasing specificity for individual tumor types.



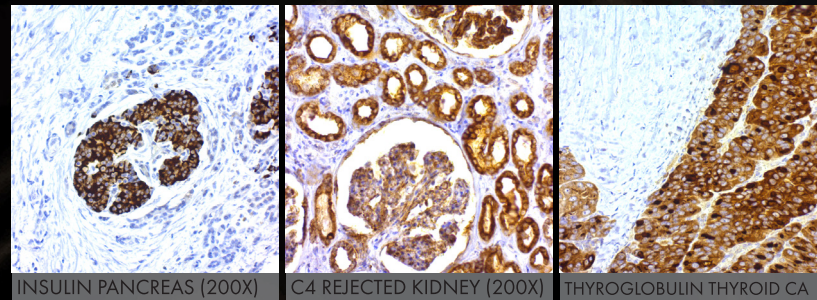
S100 MELANOMA (200X)

CEA COLON (200X)

CA19.9 LSCC (400X)

AUTOIMMUNE MARKERS

Autoimmune disease affects an increasing number of people both in the USA and throughout the world. These diseases generally arise from cell-mediated attacks against one or more constituents of the body's own tissue. We offer an expanding list of antibodies targeted at this diverse group of disorders.



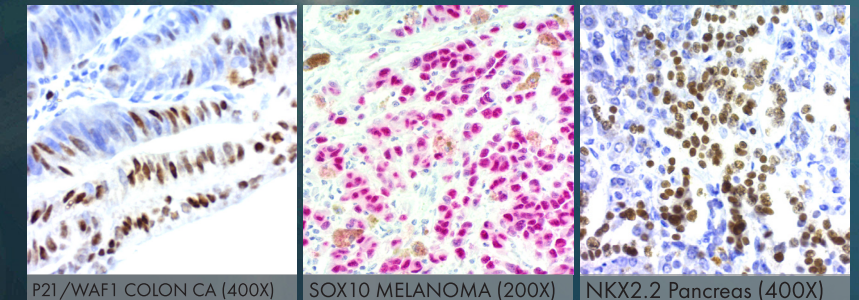
INSULIN PANCREAS (200X)

C4 REJECTED KIDNEY (200X)

THYROGLOBULIN THYROID CA

RESEARCH ANTIBODIES

This category includes many new antibodies that are focused primarily on basic research. In an effort to provide research scientists with new and unique tools, our staff constantly monitors current research publications to find valuable new markers.



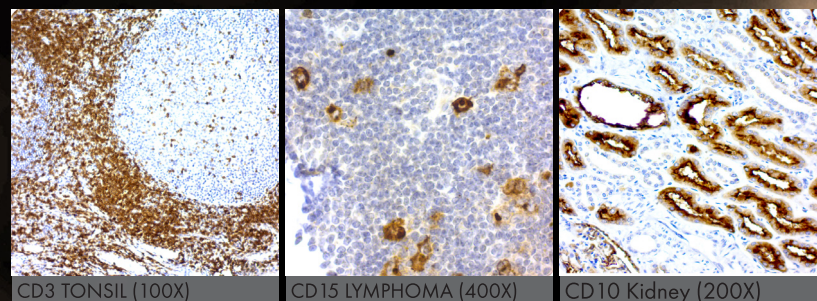
P21/WAF1 COLON CA (400X)

SOX10 MELANOMA (200X)

NKX2.2 Pancreas (400X)

IMMUNE REGULATION (CD MARKERS)

CD markers are well established in the scientific literature for their importance in a wide array of immune response systems. We are continuing to expand this family of products as relevant new markers are developed.



CD3 TONSIL (100X)

CD15 LYMPHOMA (400X)

CD10 Kidney (200X)